

# 2023-2024 Annual Report

---



*Hope  
Health  
and  
Life*

**mma**

Medical Mission Aid

# About Medical Mission Aid

Medical Mission Aid (MMA) is a Christian charity with a rich history spanning over a century, dedicated to enabling positive health outcomes in the most disadvantaged communities in the world's most vulnerable nations. MMA's journey commenced as an auxiliary of the Church Missionary Society (Victoria) in 1920, and it has remained steadfast in its mission to serve disadvantaged and impoverished populations globally.

Over the years, MMA has evolved significantly, transitioning from an auxiliary to an independent charitable organisation in 2002. Today, MMA supports medical and health-related initiatives in developing nations, forging partnerships with churches and organisations to strengthen health systems.

MMA's strategic objectives are a testimony to its unwavering commitment. One pivotal goal is the empowerment of local communities in remote and vulnerable regions to improve health outcomes amongst their people. This is achieved through the provision of scholarships to disadvantaged students pursuing medical, nursing, and allied health disciplines, as human resources are vital to positive change. Furthermore, MMA facilitates the procurement of essential equipment and medication, thereby enabling Christian healthcare providers to enhance medical services for the impoverished. Beyond this, MMA supports local partners who play a pivotal role in educating village communities on preventative healthcare, ultimately aiming to reduce the burden of disease in these areas.

A second critical objective is to ensure equitable access to healthcare for all, without discrimination based on gender, caste, class, race, religion, or political affiliation. MMA targets the most remote communities, where healthcare access is a challenge, and extreme poverty prevails. The organisation's focus extends to marginalised populations, including women, children, refugees, and individuals with disabilities.

MMA expresses profound gratitude to its dedicated supporters and partners. Their unwavering commitment has significantly improved the lives of countless individuals over the course of 104 years.

## Table Of Contents

- 1. About MMA**
- 2. FY2024 - Our Impact at a Glance**
- 3. Vision, Mission and Values and Board Members**
- 4. Board Secretary's Report**
- 5-6. Medical scholarships**
- 7-8. Preventative Health**
- 9. Caring for People with Disability and impoverished villagers**
- 10-11. Financial Summary**



# FY24: Our Impact at a Glance



## Overseas Project Partners

### Tanzania

Murgwanza Hospital  
Berega Hospital  
Kilimatinde Hospital  
Jitambue Project - Diocese of Kagera

### Pakistan

Tank Hospital

### Egypt

Episcocare

### Madagascar

SEFAM - Sekoly Fanomanana Mpitsabo

### Nepal

DHERSEC  
Minority Focus  
International Nepal Fellowship  
Human Development and Community Services

### South Sudan

Christian Health Initiatives

### Papua New Guinea

Kompam District Hospital

### Zimbabwe

Sizolwethu Mobile Health

Total  
Project  
Spend  
\$145K





# Vision, Mission & Values

## Vision

- To see a sustainable improvement in the health of all people in vulnerable communities in developing countries.

## Mission

- MMA partners with local Christians in developing countries to assist in the advancement of effective healthcare in disadvantaged communities. This is achieved through provision of medical scholarships, grants for medical supplies and supporting locally led preventative health initiatives.

## Values

- Christ-Centred - Being committed to upholding the centrality of God in our work and to respond to the Biblical mandate of Jesus to care for the marginalised and vulnerable.
- Compassion - Having empathy with others and striving to understand their lives, experiences, discomfort and suffering, with a willingness to reach out in solidarity.
- Integrity - Being accountable to the people and partners we humbly serve, transparently sharing our results, stories and lessons.
- Sustainability - Investing in projects that empower locals to meet the needs of the present without compromising the ability of future generations to meet their own needs.
- Inclusiveness, Equality and Justice - Believing in the equal value of every human being and the importance of respecting and honouring each individual

## Board Members



**Barry Kelly**  
Chair



**Cath Beaufort**



**David Bock**



**Jenny Bock**



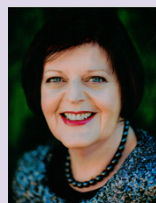
**Lara Hansen**



**Meryl McEwen**



**William Milton**



**Lynne Robertson**



**Brenton Ward**



# Board Secretary Report

## Brenton Ward



Brenton Ward meeting Dr. Gilman, an MMA Health Scholarship recipient in Murgwanza, Tanzania.

In our 104th year, I am humbled by MMA's history and what has been achieved for the most disadvantaged communities in the most vulnerable parts of the world.

The impression left on our project partners and supporters by MMA's former ED, Ms. Shanta Parker is significant. Thank you Shanta for your efficient handover and dedication to MMA's cause. Thankyou also to those who prayed for and provided wisdom and guidance to MMA's Board during this transition.

In 2023/24 our past president, Ruth Judd's contribution to the international community was recognised in the Australia Day awards. Ruth's commitment to seeing humanity flourish, as God intends, was obvious to all who worked with her. Our project partners still remind us of the impact that Ruth Judd OAM has had on their lives, communities and countries.

In June, I had the opportunity, along with Dr. Amanda Ward, to return to Murgwanza, Tanzania, to visit our project partner, The Anglican Diocese of Kagera. It was remarkable to see the incremental progress MMA's presence has had over the decades. The community is full of appreciation for MMA's support and I met with several scholarship recipients, past, present and future! The Hospital Secretary, Mr. Andrea Nziko, informed me that 90% of hospital staff have been impacted by MMA support! How fortunate we are to be part of this positive change!

In 2023-24 we completed our support for the Jonglei Health Sciences Institute in South Sudan as our partner,



MMA Chair, Barry Kelly, with past Presidents, Ruth Judd OAM and Jenny Bock.

Christian Health Initiatives, handed this project over to the Sudanese Ministry of Health. Please hold this ministry in your prayers as South Sudan remains volatile with an extreme shortage of health professionals. Thankyou, Dr. Owen Lewis and Anil Cherian for your support of this partnership.

MMA embarked on a new partnership with SEFAM, a Lutheran Health Professional Training College in Madagascar. SEFAM shares the mission and values of MMA: to make a sustainable difference to the health of vulnerable communities through training of Christian health professionals and leaders.

I would like to thank all our project partners for their work amidst the uncertainty and volatility that is often present in their local contexts. Your dedication to your communities is inspiring and essential for progress toward our shared goals.

During FY24, I visited MMA partner churches, represented MMA at local conferences and communicated with our faithful supporters. MMA's partnership with you is truly special and demonstrates what can be achieved when people collaborate on a common purpose. Thankyou to those who left a bequest to MMA in 2023/24, your gift will leave a lasting legacy.

Whilst encouraged by our history, we are also confronted by our future and the task of organisational renewal. I am reminded of Hebrews 12:1, "*Let us run with perseverance the race marked out for us*". The challenge of global poverty is overwhelming but organisations like MMA that share hope, health and life with the most disadvantaged communities in the most vulnerable parts of the world are a crucial part of the response.

The MMA Board hopes you agree as you read MMA's 2023/24 Annual Report.

Brenton Ward  
MMA Board Secretary



Our partnership with Christian Health Initiatives and the Jonglei Health Sciences Institute in South Sudan has drawn to a close.

# Medical Scholarships

## Murgwanza Hospital, Tanzania

MMA's funding in Murgwanza, Tanzania is directed toward the Hospital's locally generated strategic plan to train specialist doctors and nurses. The nearest specialist hospital is 400kms away, resulting in many patients not receiving the treatment they need.

Dr. Gilman continues his studies in Obstetrics and Gynaecology and he will be a wonderful asset when he joins other graduates serving the Murgwanza community.

In FY 2025, MMA will support Agness, a clinical officer, to become a medical practitioner and Rose, a diploma trained nurse, to upgrade to a bachelor degree. Medical Mission Aid is exploring how we can support ongoing capital improvements to Murgwanza Hospital which has not undergone significant renovation since the 1970's.



Dr Gilman (Centre) is training to become an Obstetrician and Gynaecologist. Dr. Frank (Left) is an ENT Surgeon.

## Christian Health Initiatives (CHI), South Sudan

Jonglei Health Sciences Institute (JHSI) is a governmental health training institute offering diploma-level Clinical Medicine, Public Health, and Midwifery courses. CHI, a national NGO established in 2018, was given the responsibility of running and managing the JHSI by the National Ministry of Health. In FY2024, a number of nursing and medical students completed their MMA supported studies. CHI have now handed their responsibility for JHSI back to the Sudanese Ministry of Health. This concludes MMA's work in South Sudan for now, but we look forward to exploring future opportunities in the country.

## Berega Hospital, Tanzania



Berega Scholarship students

MMA has been supporting Berega Hospital, located in a poor rural area of Tanzania, to achieve their desired outcome of having qualified staff serve their rural community. Congratulations to the five MMA supported students (four medicine and one nursing) who completed their studies in FY2024. MMA has committed to supporting Berega Mission Hospital by funding a further four pharmacy students and one medicine student who will commence their studies in September 2024. We wish them every success in their studies.

**“Studying a Diploma of Pharmacy will help me develop my career, knowledge and skill. I will help my community to improve health outcomes and accessibility of healthcare.”**

Mpendwa Wiliam Chamkiwa -  
MMA Scholarship Recipient and Diploma of  
Pharmacy Student, Berega Mission Hospital.

**“After managing and running the institute for five years from 2019 – 2024, CHI handed over JHSI to the Jonglei State Ministry of Health in July 2024 and so discontinued its active involvement.”**

Christian Health Initiatives - Portfolio Report  
2024



# Medical Scholarships

## Minority Focus, Nepal



Relationships with our project partners are important. Here, MMA Board Secretary, meets with Ms. Sony Shah, Minority Focus Program and Finance Manager, and Dr. Naryan Maharjan, Managing Director of Minority Focus

Based in Lalitpur, Nepal, Minority Focus is a long and trusted partner of MMA which is supporting Nepal's medical system and enabling young disadvantaged people to lead and serve their communities in healthcare.

In FY2024, MMA funded 9 health scholarships including 3 pharmacy students, 1 nursing student, 2 health assistants, 1 doctor, a lab technician and 1 Diploma in Dental Science. Four students completed their studies and at the time of writing were awaiting their academic results whilst preparing for internships at local hospitals. Like all or MMA's health scholarship programs, the success of the program extends beyond healthcare. Health Scholarships lead to improved socioeconomic status of families and communities and provide Christian leadership within the community. Additionally, 50% of MMA scholarships are reserved for women who often find it challenging to secure an enrolment.

Through our close partnership with Minority Focus, MMA looks forward to adding a 10th scholarship recipient in FY2025.

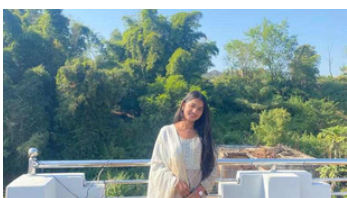


Congratulations Kamala Budhathoki from Kailali, Western District, Nepal, who graduated from her Nursing studies whilst receiving a Health Professional Scholarship from MMA

“I am thankful to MMA and Minority Focus for the financial support that energized and encouraged me to complete this nursing course. May God bless MMA and Minority Focus.”

Kamala Budhathoki, MMA Scholarship Recipient and Staff Nurse

## Human Development and Community Services (HDCS), Nepal



Monika - nursing student

### Congratulations Monika on completion of your nursing studies!

Monika finished her theoretical learning and is now working in the practical component of her training under the supervision of senior staff. HDCS has a particular emphasis on recruiting health professionals to rural areas of Nepal and Monika looks forward to being placed in a rural hospital at the end of her studies.



# Preventative Health

## Kompam Hospital Medical Outreach, Papua New Guinea

MMA continues our partnership with Enga Baptist Health Services (EBHS) following a successful first year of collaboration.

Our partnership with EBHS centres on primary health outreach to the remote and socially disadvantaged highland communities.

A particular emphasis of this outreach is the provision of dental healthcare and raising awareness of the highly addictive habit of betel nut chewing. This practice leads to a devastating increase in oral cancers. Raised awareness has occurred through bush patrols, health clinics and community settings such as markets and schools. The PNG health system has limited capacity to treat cancer and therefore prevention and early detection is critical.

This program educates locals on the challenge of a changing, western influenced, high sugar diet leading to many dental complications and many people losing their teeth by adulthood. Primary health care and chronic disease management is provided for conditions such as diabetes, hypertension and cardiovascular disease.

We are full of gratitude to our project coordinator in Kompam, Dr. Camy Thomas, for her skills, communication and commitment to the people of the PNG Highlands.



Dr. Camy Thomas (right) is a dental missionary, pictured here at a Continuing Dental Education Conference in remote Papua New Guinea.

### Project Outcomes:

- Nearly 1000 children received dental health education
- 13 Dental Primary Care Clinics conducted
- 44 people received oral cancer screening
- 15 Dental health professionals received professional development

*Prayer Point:* for recruitment of an additional oral and community health trainee to replace the recent graduate.



Kompam Hospital Dental Outreach Clinic in the remote Highland area of Papua New Guinea.

# Preventative Health

## Jitambue Project, Tanzania

Jitambue project (self-realization) is raising awareness amongst young people on reproductive health and life skills.

The Jitambue project continues to make a significant impact by training young people and community members on vital topics such as family planning and the consequences of early childbirth to reduce maternal morbidity and mortality. This training not only improves individual lives but also strengthens families and communities.

In FY24, almost 6000 students were impacted by the Jitambue project.



Nurse Joanna from Murgwanza Hospital demonstrates the female menstrual cycle and discusses family planning with students.

An additional focus of the Jitambue Project in FY24 was to provide feminine hygiene products to secondary school students so they can attend school throughout their cycle. The Jitambue Program distributed 800 reusable pads during FY24 which resulted in improved school attendance amongst female students.

**“I learned about my body and menstrual hygiene.**

**The provision of sanitary pads was a game-changer. No longer did I have to worry about missing classes or facing embarrassment.”**

**Neema - Jitambue Program Participant.**

## Episcocare, Egypt



Archbishop Samy Shehata greets program participants.

Our partners on the ground in Egypt, Episcocare, are working towards a future without Female Genital Mutilation and the severe physical and mental implications that are associated with this practice.

Episcocare empowered 120 youth volunteers to run a program in 6 community centres around Egypt to raise awareness of FGM amongst 1540 members of extremely disadvantaged communities.

The program included theatrical plays, flyers, gifts, surveys, social media campaigns, speeches from faith leaders and even television news reports!

The program adopted a holistic approach as participants learnt about the personal, medical, legal, religious and social ramifications of FGM.

**“These campaigns have played a crucial role in raising awareness in the community about important issues.. it will have a significant impact on enhancing awareness and achieving the desired positive change.”**

**Mina Al-Aqda - Training and Development Consultant  
Episcocare, Egypt.**



# Caring for people with disability and impoverished villagers

## Kilimatinde Hospital, Tanzania

MMA has maintained a longstanding partnership with Kilimatinde Hospital and the Anglican Diocese of the Rift Valley in remote Tanzania.

This year, MMA allocated funds for essential medications and laboratory reagents.

## TANK Christian Hospital, Pakistan

The Ulla Schmitz Memorial School supports staff of Tank Christian Hospital by providing a quality education for their children who attend the school. This is important as health professionals who work in Tank make a significant sacrifice by working in a remote community.

MMA is pleased to assist the school and hospital staff by providing an educational textbook subsidy which dramatically reduces the cost of textbooks for parents of children attending the school. Importantly, this also helps the hospital attract and retain a skilled workforce.

## Sizolwethu Mobile Health, Zimbabwe

Sizolwethu Mobile Health is a Christian Charity that improves health outcomes amongst the socially disadvantaged residents of Bulawayo, Zimbabwe. This is achieved through the provision of free medical care, health education and community development programs.

Sizolwethu seeks to overcome the issue of poor access to health services by sending nurses and health educators into the peri-urban and rural communities.

In FY24, Sizolwethu Mobile treated 6125 patients from informal settlement communities and MMA was pleased to provide funding toward the purchase of vital medications.



A typical health clinic run by Sizolwethu Mobile Health in the informal settlements of Bulawayo.

## DHERSEC, Nepal

Disabled and Helpless Rehabilitation Service Centre (DHERSEC) was established in 2007 to improve the health and welfare of one of the most marginalised and impoverished groups, people with disabilities (PWD). They also help the poorest of the poor, including those in the 'untouchable' caste and widows. They collaborate with local healthcare organisations, such as B.P Koirala Institute of Health Sciences (BPKIHS), to provide healthcare and surgery to those who cannot afford it.

In FY24, DHERSEC provided livelihood training for 50 single women, educational support for 325 children, healthcare for 12 clients/week and provided 25 wheelchairs.

Thankyou to Mr. Sunil Khadka (Nepal) and Dr. Owen Lewis (Australia) for their support with this partnership.



### A story of Resilience and Hope from DHERSEC:

Prativa (pictured above) is a 19 year old girl from remote Nepal who collapsed unexpectedly at home and was diagnosed with rheumatic heart disease.

Her family was unable to afford the critical surgery she needed.

DHERSEC recognised the urgency of Prativa's condition and was able to provide financial assistance which enabled Prativa to undergo necessary surgery.

Once recovered, Prativa resumed her education and DHERSEC continued to support her with essential stationary items and clothing.

Prativa's journey from a life threatening illness to successful medical care and a return to normal life is a testimony to DHERSEC's role in supporting vulnerable clients in their time of need.



# Financial Statements

Barry Kelly

## MMA Financial Summary

We remain extremely grateful that our members and donors have continued to support MMA through the last financial year. We are also grateful for the legacies which Margaret Morris & Margaret Scott-Simmons have left for MMA.

All donations received were spent on our projects across Africa, Asia and Papua New Guinea with all other operating costs being covered by income received from our investment returns and by dipping into MMA's reserves.

## FY2024 Income and Expenditure

Total revenue was recorded at \$293 thousand (k) for the 2024 Financial Year (FY):

- Donations, excluding 2023 Wezesha project, which were up by 8% on the previous year, represented 49% of MMA's revenue.
- Bequests represented 28% of MMA's revenue.
- MMA's investment portfolio return represented 23% of our revenue.

Total Expenditure for FY2024 was \$206k, a 25% increase on the previous year.

- Project funds distributed to partners amounted to \$145k, up by 7%, excluding the Wezesha project, on the previous year.
- Employment, Operating & Administrative expense were down 37% on the previous year, mainly due to the loss of MMA's Executive officer in Q4 2023.

MMA reported an FY2024 surplus of \$87k compared to a deficit of \$6k in FY2023.

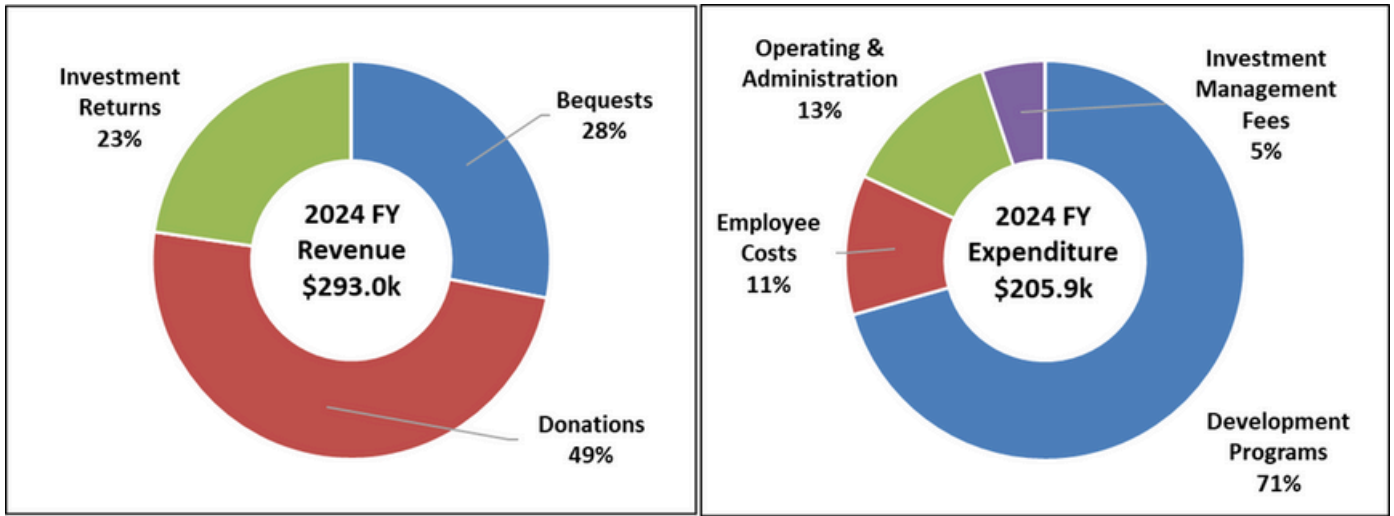
## MMA 2024 Financial Report Extract – Statement of Profit & Loss

	Note	2024 \$	2023 \$
Revenue	2	293,660	276,927
Aid and development program expenditure		(145,407)	(193,885)
Employee benefits expenditure		(23,298)	(57,350)
Operating and administration expenditure		(26,649)	(18,623)
Investment management fees		(10,539)	(11,147)
Other Expenditure		-	(1,964)
<b>Surplus / (Deficit) for the year</b>		<b>87,767</b>	<b>(6,043)</b>
Other comprehensive income		-	-
<b>Total comprehensive income for the year</b>		<b>87,767</b>	<b>(6,043)</b>

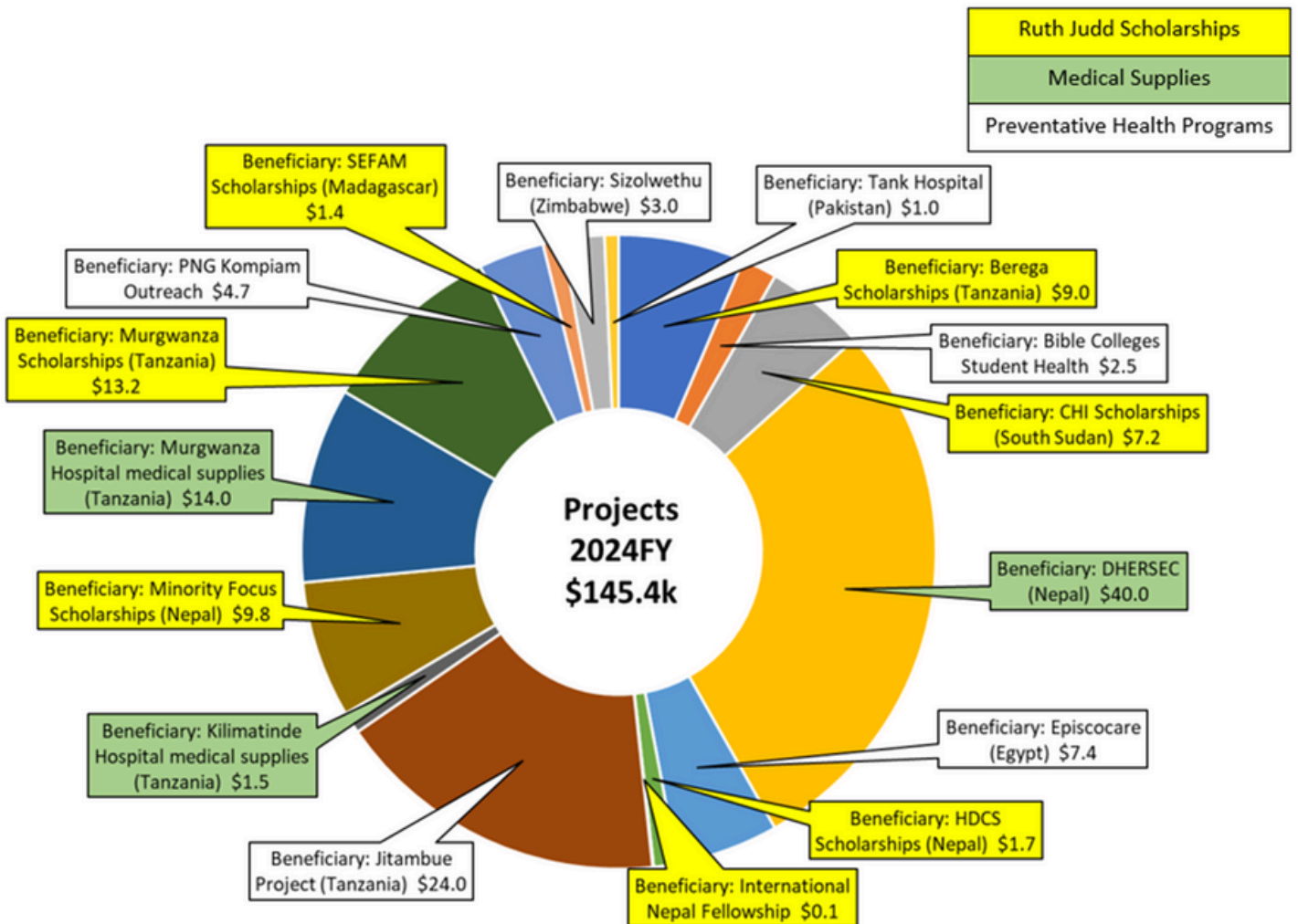
An excerpt from the reviewed FY2024 MMA Financial Statements.

## 2024 Financial Performance in Charts

The following charts present MMA's sources of income and expenditure incurred as a proportion of the total income received and the total MMA spend.



The following chart summarises the projects which MMA supported during FY2024 and the value (\$'000) of MMA's payment to each of the projects.







# Thank You

Your prayers and support for the work of Medical Mission Aid and its partners are very much appreciated.

For more information please contact:



PO Box 1142  
Surrey Hills North,  
Vic 3127



[mmaexd@gmail.com](mailto:mmaexd@gmail.com)



[www.medicalmissionaid.org.au](http://www.medicalmissionaid.org.au)



Sasajila Village, Tanzania



A Community Health Worker in the Papua New Guinea Highlands teaches children to brush their teeth with fluoridated toothpaste for the very first time.

